

Waka Ama New Zealand Annual Report

2018



wakaama

Outrigger / Va'a / New Zealand

Contents

- 01** Waka Ama NZ Board
- 02** Waka Ama NZ staff
- 03** Chairmans Report
- 05** Chief Executive Report
- 17** Statistics
- 21** Partnerships
- 22** Performance Report



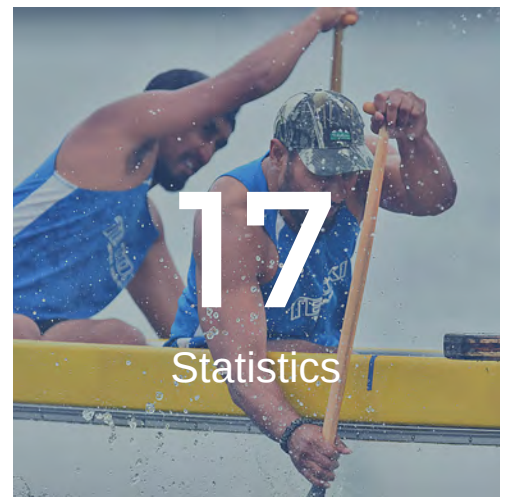
wakaama
Outrigger / Va'a / New Zealand



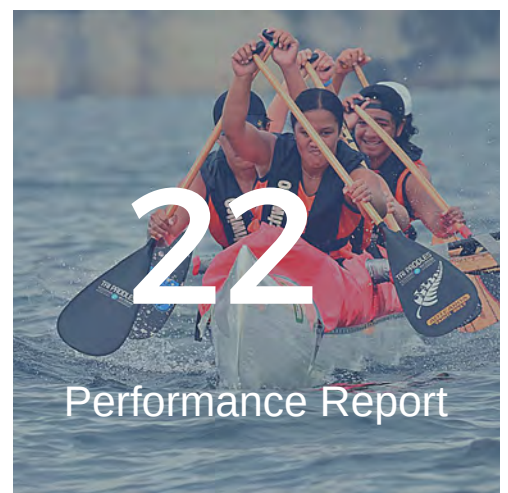
Chairmans Report



CE Report



Statistics



Performance Report

WAKA AMA NZ BOARD

Paora Howe
Board Chair



Tim Marshall
Deputy Chair



Zalene Douglas
Board Member



Moana-Lee Raihania
Board Member



Laurie Durand
Board Member



Ngaire Pehi
Board Member



wakaama
Outrigger / Va'a / New Zealand



Scott Linklater
Board Member

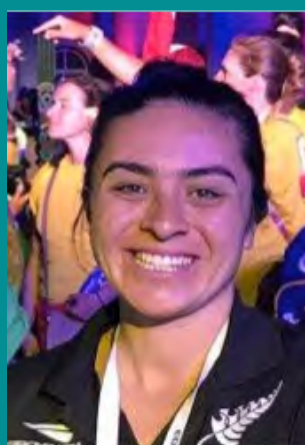
WAKA AMA NZ STAFF



Lara Collins
Chief Executive



Debbie Sellar
Office
Manager



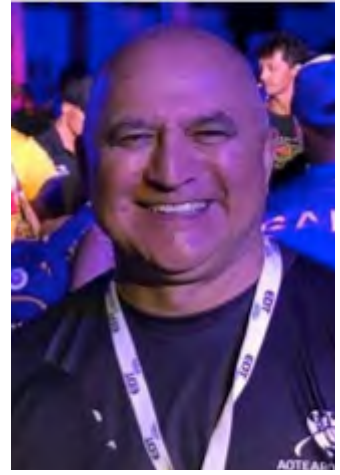
Amiria Mita
Events and
Projects
Manager



Michelle Mclean
Events and
Projects



CHAIRMAN'S REPORT



*E ngā mana, e ngā reo, e ngā hau e wha – koutou e kawea ana i te mana o waka ama – tēnā ra koutou katoa
E tika ana ki a mātou ki te mihi - tuatahi ki te Kaha Rawa, tuarua, ki a rātou mā kua wheturangitia. E ngā kaihoe kua hinga, moe mai ra. Anei rā te hunga e mihi kau ana ki a koutou katoa.*

Board Matters

Our Mission Statement is: 'To lead the development, practice and promotion of the sport and culture of Waka Ama'. As I look back on 2018, I am happy that we are continuing to support that statement to the best of our ability.

Overall, 2018 has been a relatively settled year for the Board. We welcomed Ngaire Rae and Zalene Douglas, who together bring skills and experience in health management and community law to the table. Both are increasingly valued and valuable commodities, as sport in general becomes more sensitive to issues of health and community wellbeing, and to notions of equality and equity. Ironically, we are living in an age when, on the one hand there is increasing diversity, yet on the other hand, it is also becoming increasingly more common to complain about difference – whether real or imagined. Without mentioning names, you will be aware of how leaders with a narrowed vision can distort basic truths while proclaiming to be acting with total integrity. Fact and fiction are deliberately blurred. Difference is scorned. Let's not go there.

One of the things I admire about waka ama is that we have a basic product that remains the same, and that has integrity. We share a love for the water, for shared new challenges (new racing events to go to, new crews, new coaches, while still feeling like part of a whanau and team); we share a love for shared experiences that are both the same and different. Any changes made within this sport are usually relatively small. But in our thirty-year history, the small incremental changes that have taken place over time are such that we would never willingly go back to where we were. We are ever-moving towards being a greater product and experience for those who choose to be involved. That, I believe, is the Board's true role – to help the CE realise the sport's potential.

Here are some of the things we can be proud of:

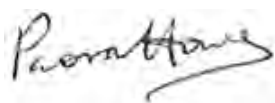
- The World Sprints in Tahiti was a very positive experience for over 550 paddlers from Aotearoa/New Zealand. The Tahitians were gracious hosts, and deserved high praise. One of the spiritual homes of the sport, local paddlers excelled. But, we did pretty well. We won a good share of medals, sure. But we also competed in good spirit, mixed well with paddlers from other nations, made lots of friends, and left the place with, I believe, our own reputation as a nation greatly enhanced.

- Our operational team have continued to provide exemplary service to waka ama paddlers and administrators. How do I know this? One of the things Board members get to see and hear about in detail is how Lara and her team organise the sport. Our own surveys and others (like the Sport NZ Leadership 360 Survey) suggest that we are fortunate to have a visionary leader who has a genuine passion for making sure we meet the demands of the Mission statement. My advice? Make sure you take part in our surveys - we want to know what you think so we make good decisions. Data and information are potential gold.
- Our sponsors continue to want to work with us. Enough said.
- New relationships are developing that may in time take our sport into quite a different space. These include, for example, with High Performance Sport NZ and Canoe Racing NZ. The Board hasn't had time to talk in depth about the potential these two organisations have to influence what we do – or vice versa. But clearly the potential for us to share resources and knowledge is exciting. Imagine the possibility of waka ama paddlers becoming world kayakers. (And the other way around too).
- Two important policies developed and implemented over this year include the Code of Conduct policy (which we began to develop last year) and the Gender Diversity policy. One came out of the need to be clear about what clubs and members can do when other members behave in a way that brings disrepute to themselves and to the sport. The other acknowledges that accepting the notion of greater diversity requires very clear guidelines. It is important that waka ama members learn a lot more about gender diversity, so that they can appreciate the Board's policy position.
- Our financial report shows that as an organisation we are earning and spending within our means. That's important to the Board. Our challenge is to support the continued growth of the sport in the same vein – that is, for us to grow without taking financial risks that could leave us vulnerable to outside pressures.

Thank you again Lara and the team (Debs, Michelle, Amiria, Conan) for a brilliant year. Thank you especially Conan Herbert for your work as our first National Development Manager. It is important that we acknowledge your creative calm and contribution over many years. I know you are not lost to us, but you need to know you will be missed. We wish you well.

And to you all – paddlers, administrators, kaimahi alike - all the best for a happy waka ama 2019.

Ngā mihi nui,



Paora Howe,
Chair Nga Kaihoe o Aotearoa (Waka Ama NZ) Board

CHIEF EXECUTIVE REPORT



2017/2018 has been another busy and successful year for our sport and the organisation of Waka Ama New Zealand. We continue to work towards and achieve our strategic goals and our strategic plan. Paora Howe for his outstanding contribution and leadership as Board Chair for a 7th year, and to the Board Members: Tim Marshall (Deputy Chair), Moana-Lee Raihania, Laurie Durand and Scott Linklater, Ngaire Pehi and Zalene Douglas.

Over the past 6 years from 2012 our affiliated membership has increased by a staggering 90%. We finish the 2017 Year with 5202 affiliated members. It was slightly down from 2017, however this can be attributed to the focus that many clubs put on the 2018 World Sprints and representing so well in Tahiti, with 560 paddlers from Aotearoa in attendance.

This growth has not happened by chance and is a direct reflection of strategic planning implementation and work, not only being done at the national office, but also by all the regions and clubs throughout the country. Financially, we attained a small budgeted surplus and are working towards building up our financial reserves so that we are strong for future generations to come. Like most small sports in New Zealand we must work hard to monitor budgets and attain funding and sponsorship to ensure our operations are sustainable. Special thanks to Debbie Sellar who does a fantastic job with our funding applications.

As we celebrate 30 Waka Ama Sprint Nationals this year. We reflect on the amazing journey that waka ama has had to get to this point. An amazing vision and energy from so many people along the way. I would like to acknowledge some of our paddlers who passed away this year; Alf Pukepuke, David McFarlane, Brent Lynn and Paul Marshall-Slade, each of them having made contributions to our sport during their involvement.

The next few pages are just some of the highlights from this year.

Te Wānanga o Aotearoa Waka Ama Sprint Nationals 2018

3286

Total paddlers

67

Clubs

with 1887 teams from those clubs

5yrs

The Youngest Paddler

78yrs

The Oldest Paddler

1550

Male paddlers

1736

Female paddlers

1204

Paddlers under 13 (midget & int)

2105

Paddlers 5 to 19yrs

120

Amazing volunteers

5000



Photos uploaded

to our website and Facebook page for members and public to share and enjoy



2018 Te Wānanga o Aotearoa Waka Ama Sprint Nationals

The 2018 Te Wānanga o Aotearoa Sprint Nationals were once again the highlight in our calendar year. As you can see on the previous page by the statistics it was another huge event that continues to draw paddlers and supporters from all over Aotearoa.

As the event rolls around every January and the emails beings to hum, we enjoy packing up our office and travelling to Lake Karāpiro - especially to catch up with our amazing group of volunteers who sit at the core of the event (over some spectacular kai thanks to Hone Mutu and whānau).

The racing was spectacular and fierce as a number of teams were working their way towards qualifying for the IVF Va'a World Sprints later in July. We would like to congratulate those who competed for the first time or maybe the 10th time, and a special mention to those coaches, managers, uniform washer, paddle wranglers, mum, dads, aunties, uncles and grandparent who do all of the behind the scenes mahi.



30 years of Waka Ama Sprint Nationals - January 2019

We are incredibly honoured to deliver our Annual National Waka Ama Sprint Championships, even more so, to celebrate 30 years of a truly wonderful event on Lake Karāpiro

The first Waka Ama Sprint Nationals were held in 1990 at Lake Karāpiro. Back then there were 34 teams and 17 clubs..... this year over 1700 teams from 61 clubs will race for the prestigious national sprint titles. There will be a phenomenal 3,577 paddlers from throughout the country hitting the water this week - the largest number of competitors in 30 years and 300 more than 2018!

We would like to acknowledge those who have come before us and those who are no longer with us that love the event as much as we do. We would like to make a special mention of the 6 individuals who have attended all 30 National Sprints - James Papali'i, Hoturoa Kerr, Louise Henderson, Raipoia and Matahi Brightwell.

We have a number of special events planned throughout the week and we are looking forward to another week of exciting racing mixed with the whanaungatanga that our waka whānau bring to the shores of Lake Karāpiro. A full wrap up with be provided in the 2019 Annual Report





TAKAPUNA BEACH CUP

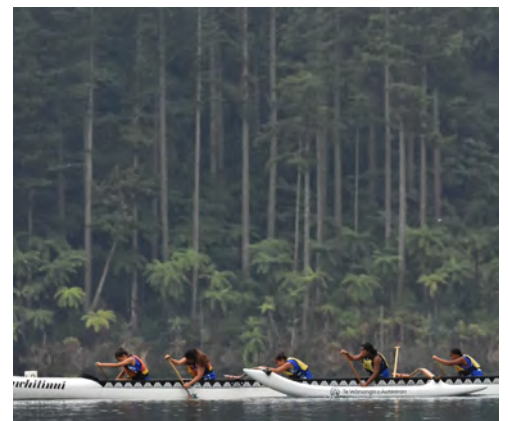
Takapuna Beach Cup

Takapuna Beach Cup is New Zealand's largest international distance race and in 2018 the 12th Edition of the event saw 350 paddlers (120 more than last year) and international teams from: Hong Kong, Tahiti, England, Hawaii, Australia, Cook Islands Samoa, California. The feedback from the event was overwhelmingly positive. In 2019 Takapuna Beach Cup the 13th edition of the Takapuna Beach Cup will be held and already we have teams from Tahiti, Australia, Hawaii and Singapore.

Secondary School Nationals



The 2018 Secondary School Nationals were very successful with the event seeing an increase in the number of Schools, 118 Schools took part and 1735 students. We anticipate the numbers rising again next year and will likely see us exceed 120 schools. Te Waiariki Pūrea Trust did a great job of hosting the event and the feedback from the event was overwhelmingly positive - 96% of schools said the event was excellent! The Secondary School Nationals is always a highlight on the calendar. We have a wonderful relationship with Te Waiariki Pūrea Trust who have hosted the event in Rotorua since 2005 and we look forward to working with them again to deliver another great event at Tikitapu in 2019.



18th International Va'a Federation World Sprints

The competition was always going to be tough heading to Tahiti. All the New Zealand paddlers (elite and club) have been training through a gruelling winter and were looking forward to getting to a warmer Tahiti climate. All paddlers, management and support team carried themselves well in Tahiti and represented their clubs, whānau and Waka Ama NZ with pride.



560 + paddlers
33 clubs
8 days races
400 races

ELITE COMPETITION

Gold 14 | Silver 18 | Bronze 7

The V12 Elite Mens race kicked off the competition and was truly incredible to watch, the men took silver by the closest margins. The Mens competition was always going to be intense with Tahiti on home water. The Elite Men and Elite Junior Men taking Silver in each of their races. Junior girls dominated, bringing home gold in their 500m and 100m event. Elite Women took gold in both V12 and 500m race, and a closely fought silver in 1500m event.



PARA RACING

The Para races are always a highlight at any event. Before the racing started all Para Paddlers were officially classified under new ICF requirements. These classifications will carry them throughout out all future NZ and international events (unless circumstances change)

Our Para team inspired, winning the V12 race against Tahiti, then backing that up with a V6 1000m gold and silver in the 500m. Marcus Thompson, Jo Pikia, Jac Courtier and AJ Macdonald brought home gold medals in their V1 events, Bruce Campbell gained a silver and bronze, and Christine Walters a silver! Peter Cowan and George Thomas had extremely tough competition in the VL3 Mens events.



V1 Paddlers

Gold 3 | Silver 6 | Bronze 5

Highlight - Junior 16 and Junior 19 women's division came away with a clean sweep of the medals! Notable performance from Marama Elkington racing to gold in the Open Women's V1 500m. A title held by Tahiti since 2002.

CLUB COMPETITION

Full results are online here <http://www.ivfiv.org/results1.html>

Medallists are listed at the end of this report. A few highlights were: Once again, our junior girls were a force to be reckoned with, bringing home nearly all medals on offer in the J16 division and J19 divisions. Team Taitokerau in the Master 60 Womens division – led by Hilda Halkyard-Harawira - raced to a clean sweep in the 500m, 1000m and V12 500 event.



SPONSORS

Waka Ama NZ partnered with previous partners Tai Paddlers who provided a great discount deal for all elite paddlers and Strongarm for all elite team apparel. We are thankful to have the ongoing support from both these companies



Overall Club Winners

Horouta Waka Ama Club was named as the overall club winners taking home 5 gold, 5 silver and 2 bronze. This is no mean feat on Tahitian waters!



Tahiti Hosts

The local organising committee and Tahitian Federation did a fantastic job throughout the event. Their hospitality and manaakitanga was exceptional.



Waka Ama NZ Management Team

A huge thank you to the Waka Ama NZ team.

Area Coordination team – Marinna Millanta-Lowry, Debbie Sellar and Ngahuia Mita

Junior Girls – Sieda Tureia, Penny Scragg

Junior Boys – Maori and Agnes Tere

Open Women – Kiwi Campbell, Florrie Brooking

Open Men – Mark Malaki Williams, Mereana Rennie and Marinna Millanta-Lowrey

Para Va'a - George Thomas, Honoria Ropiha, Angeline Tangiora and Rob Shephard

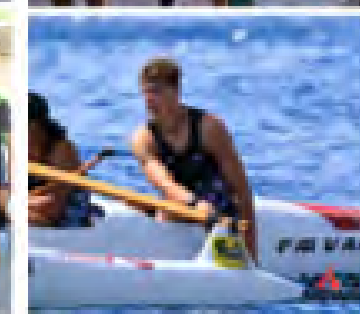
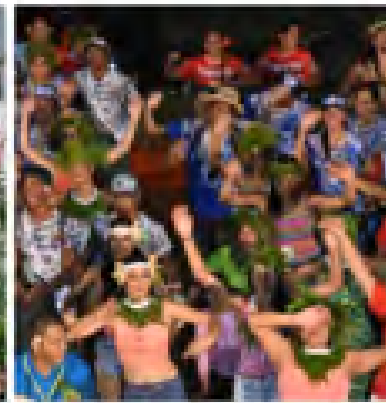


Cultural Night

Once again, our Elite, Para and Club paddlers came together to showcase our strength off the water – our culture. Led by Hoturoa Barclay Kerr, Turanga Barclay-Kerr and Jamille Ruka our contingent performed a beautiful bracket on the cultural night.

Haka Video - <https://www.facebook.com/TahitiNuiTelevision/videos/2141468842550410/>





Waka Ama NZ Coaching and Development

Culture of Waka Ama learning tool

At the 2018 Sprint Nationals we launched the Culture of Waka Ama online learning tool. It is a learning tool for our members and for the wider waka ama community to learn about the culture of the sport of waka ama - the way we do things and why. The booklet provides new and existing members with basic information about the history and cultural aspects of waka ama so that all feel included. The feedback we received was extremely positive. We have over 300 participants who have completed the online tool.



Coaching Database

We keep a database of all those individuals who have completed at least one of the following Foundation Coach Modules: How-to Coach, Coaching Basics, Steering Basics, Paddling Basics, CBE Safety Basics and the Culture of Waka Ama Online Learning Tool. We have a total of **900** individuals in our database

Certified Foundation Coaches

This year we congratulated the following 25 individuals who have completed all modules in the Foundation Coaching level and are our first certified Foundation Coaches:

Pene Cooper	Te Toki Voyaging Trust	Celestina Phillips	Otaikokako Waka Ama Taranaki
Craig Pauling	Te Waka Pounamu	Kato Dentith	Otaikokako Waka Ama Taranaki
Sherry Carne	Parihaka Waka Ama Inc	Lisa Tua'a	Pakuranga Outrigger Canoe Club
Auds Wikiriwhi	Taniwha Outrigger Canoe Club Inc	Marlene Tuuta	Taranaki Outrigger Canoe Club
Maddie Dawe	Te Awa Haku	Michael Fox	Hikoikoi Waka Club
Merryn Herlihy	Te Waka Pounamu	Mike Tua'a	Pakuranga Outrigger Canoe Club
William Matthews	Te Paerangi Waka Ama Inc	Paora Tamati	Otaikokako Waka Ama Taranaki
Kathie Mackie-Smith	Tauranga Moana Outrigger Canoe	Santina Kawana	Otaikokako Waka Ama Taranaki
Lawrence Smith	Tauranga Moana Outrigger Canoe	Petra Melville	Hikoikoi Waka Club
Opal Howell	Hikoikoi Waka Ama	Jack Wormald	Te Waka Pounamu
Chris Fox	Hikoikoi Waka Ama	Keelin Aspeling	Otaikokako Waka Ama Taranaki
Gavin Aspeling	Otaikokako Waka Ama Taranaki	Dave Gunter	Mawhera Waka Ama Club
Tamara Ruakere	Otaikokako Waka Ama Taranaki		

CBE Safety Basics Course

We continue to roll out the CBE Waka Ama Safety Basics certificate, which is a collaboration with Coast Guard Boating Education. So far we have had over 180 people complete the course and receive a certificate.



Waka Ama NZ Census



Waka Ama New Zealand worked with Statistics New Zealand to create an online Census to capture information of our Waka Ama membership

PHASE 1

In June we released the Waka Ama Census to gather important demographic data about our Waka Ama Membership. This will enable us to have a clearer picture of who our membership is and how we can ensure that we best serve the needs of our Waka Ama community. Moving forward we will also be able to communicate more directly with our community. It will also enable us to give a very clear picture of our Waka Ama community to our partners and potential sponsors. Our goal was for everyone involved in the Waka Ama community to complete the survey. Parents were able to complete the census for their children

We had a number of prizes donated by Waka Ama Equipment suppliers, who were all very keen to support this kaupapa and our online Census. The total value of Prizes we gave away during our Census is \$3500. Everyone that completed the census was eligible to win these prizes. We drew all the prizes at the completion of the Census and announced the winners.

The link for the census was directly provided to clubs. The census was also heavily promoted on our website, Facebook page and Instagram.

970 people responded from 77 different clubs.

Top 5 clubs with the most respondents were Horouta Waka Hoe Club , Manukau Outrigger Canoe Club, Nga Tai Whakarongo, Otaki Waka Hoe and Tauranga Moana Outrigger Canoe.

93% of respondents were paddlers

62% of respondents were Māori, 43% European, 5% Samoan, 5% Cook Island 1% - Chines/Tongan/Niuean, >1% Fijian, Indian, 9% Other (Canadian, Dutch, French etc)

PHASE 2

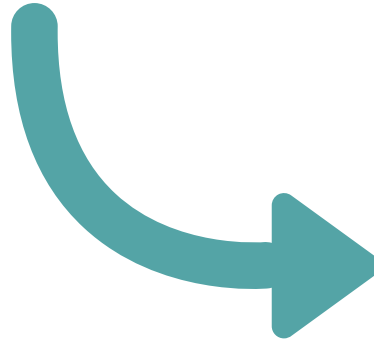
From the November 2018 the Waka Ama NZ membership site was be updated with the ability to capture further information of our Waka Ama membership. If individuals had completed the Waka Ama NZ Census, the data was automatically added to their membership ID. The additional information fields were initially introduced as optional. However, from December 2018 they are now mandatory for every new Waka Ama NZ ID created.

Website & Social Media

23,700 on Facebook!

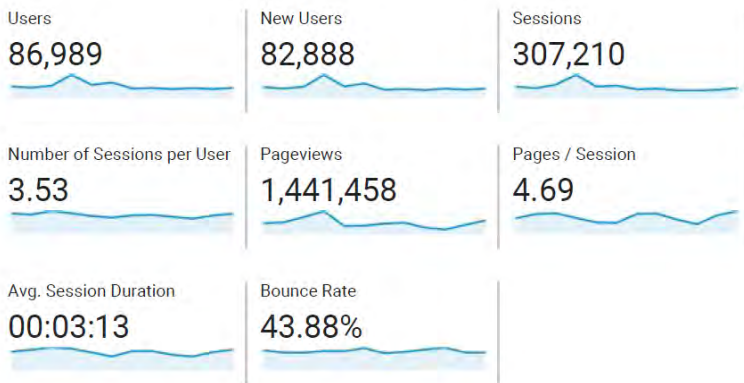
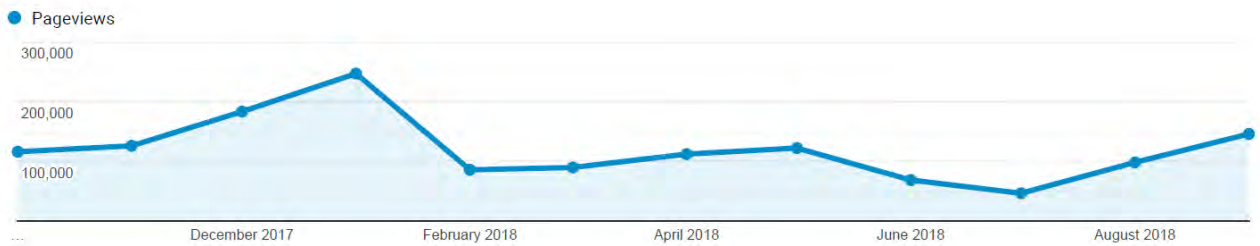


To put this into perspective here's what some other organisations are at



- All Blacks = 4500,000
- New Zealand Netball = 63,246
- NZ Rugby League = 57,756
- Softball NZ = 16,500
- Water Safety NZ = 16,000
- Surfing NZ = 15,900
- NZ Rugby Union = 8,600
- Sport New Zealand = 8,200
- Rowing New Zealand = 6,700

Website analytics



Country	Users	% Users
1. New Zealand	73,919	84.36%
2. Australia	3,886	4.43%
3. United States	3,564	4.07%
4. French Polynesia	994	1.13%
5. France	474	0.54%
6. Canada	432	0.49%
7. United Kingdom	399	0.46%
8. Nigeria	291	0.33%
9. Peru	268	0.31%
10. China	240	0.27%

Conan Herbert - Ngā mihi nui ki a koe

We have been very fortunate to have Conan as a team member since 2013, his skill set and Waka Ama knowledge are outstanding and his contribution to Waka Ama New Zealand has been considerable. Whilst this is the end of Conan's current employment with us, we know that this is just the end of one of Conan's chapters with the Waka Ama journey and that he will remain involved on many levels. Conan will still be providing some contract services with Waka Ama NZ in a coaching and development capacity so you will still see him delivering courses etc..

On behalf of the team at Waka Ama New Zealand, we wish you all the best in your future endeavors Conan and we look forward to seeing you the next event!
Thanks for all your hard mahi.



Waka Ama NZ Office

Our national Waka Ama office continues to work very hard. We have 3.75 full time employees and several contractors who provide services ranging from event management to IT. A big thank must go to all our staff and contractors who truly go above and beyond the call of duty in all areas of their roles. We have a fabulous team of people and I am truly grateful for their professionalism, passion and dedication to our organisation.



STATISTICS 2018

Nga Kaihoe o Aotearoa (Waka Ama NZ)

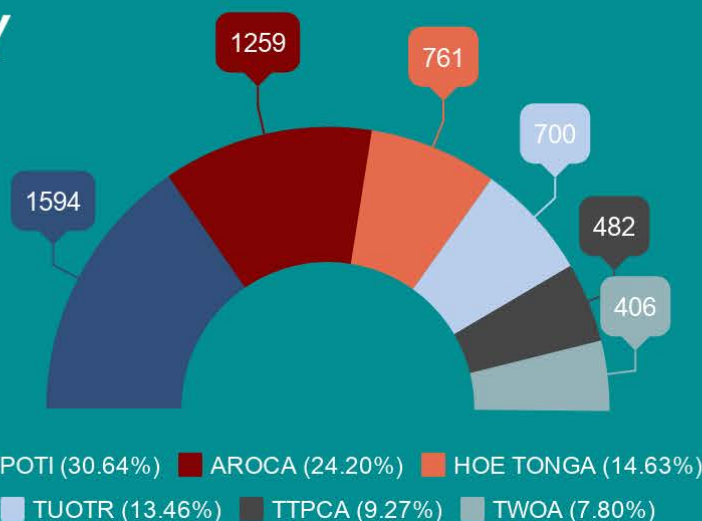
5202 MEMBERS

6 REGIONS

118 SCHOOLS

82 CLUBS

1735 SECONDARY STUDENTS



4 KEY VALUES



MANAAKITANGA



HAUORA



WHANAUNGATANGA



TŪ TANGATA

ONE

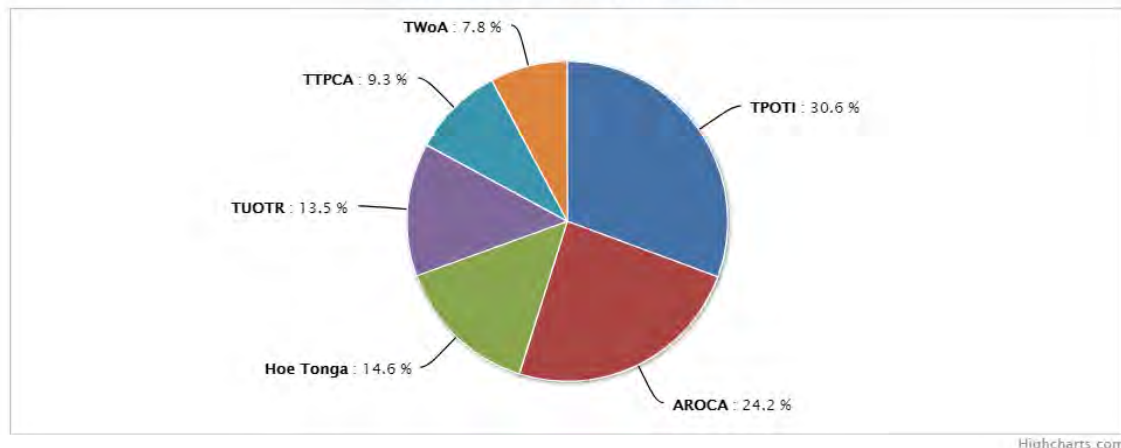
MISSION

To lead the development, practice and promotion of the sport and culture of Waka Ama.

Statistics 2018

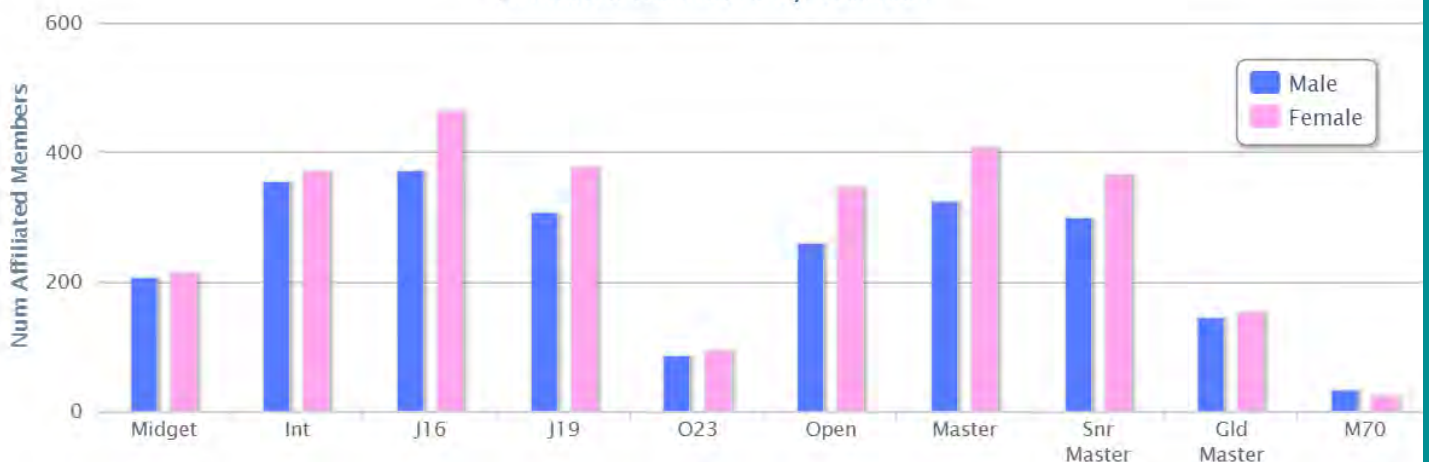
Region	Members	Pct
Te Puku O Te Ika	1594	30.6%
Auckland Region Outrigger Canoe Assn	1259	24.2%
Hoe Tonga Pacifica Waka Ama Association	761	14.6%
Te Uranga O Te Ra	700	13.5%
Tai Tokerau Polynesian Canoe Association	482	9.3%
Te Waka o Aoraki	406	7.8%
Total	5202	

Affiliated Members per Region



Highcharts.com

Affiliated Members by Division



Age Division	Male	Female
Midget	206	214
Int	355	372
J16	372	464
J19	306	376
O23	84	94
Open	260	347
Master	324	409
Snr Master	298	366
Gld Master	145	153
M70	33	24
Total	2383	2819

Partnerships

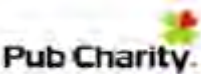
Thank you to Te Wānanga o Aotearoa for their support of our major events over the past 3 years. We are very pleased to have your support for the next year as naming sponsor of the 2019 Te Wānanga o Aotearoa Sprint Nationals. Our 2 organisations share many synergies and our commonality is highlighted by our shared values. We look forward to working together to fulfil the potential of our partnership.



Thank you to Sport New Zealand for their investment in Waka Ama New Zealand through Community Sport. We are working hard to deliver on our partnership outcomes and in doing so will help to contribute towards Aotearoa's wellbeing through organised sport.



Thank you to the funders and Gaming Trusts who support not only our national organisation but many of our clubs and regions too. This year we have had funding and support from the following generous sponsors:



Coming up



We have another exciting year ahead for Waka Ama NZ. The summer is often our busiest but most exciting time as we kick off our year with the 30th Te Wānanga o Aotearoa Waka Ama Nationals (our biggest to date with over 3,500 paddlers.) We are looking forward to usual major summer events: Takapuna Beach Cup, Secondary School Nationals and Long Distance National - held in April at Orakei, Auckland.

As our sport continues to grow we need to work hard to ensure that new paddlers have clubs to join and that there are pathway opportunities for everyone at every level within the our sport. Working together towards our sports vision and strategic goals. We are very proud of our coaching pathways and are looking forward to building on this in the coming year.

In August we will once again be hitting the shores of the Sunshine Coast for the IVF Va'a World Distance Championships, where we will see more teams included in this event from J19 to Master 70 teams.

This will be another exciting year for our Para paddlers as we get even closer to the Paralympics 2020, we are currently working with Tom and the team from Canoe Racing New Zealand as well as Paralympics New Zealand who are supporting Waka Ama through this process.

Thanks to all those that contributed to a great 2018, we're looking forward to everything 2019 brings!

Ngā mihi

Lara Collins
Chief Executive
Nga Kaihoe o Aotearoa (Waka Ama New Zealand)

2018 PERFORMANCE REPORT

SEPTEMBER 2017 - OCTOBER 2018

Prepared by:
WILLIAM AND BUCK AUDIT (NZ)
LIMITED

Nga Kaihoe Aotearoa (Waka Ama New Zealand) Inc.

Independent auditor's report to the Members

Report on the Performance Report

Opinions

We have audited the performance report of Nga Kaihoe Aotearoa (Waka Ama New Zealand) Inc. (the entity), which comprises the the statement of financial position as at 30 September 2018, the entity information, statement of service performance, statement of financial performance and statement of cash flows for the year ended 30 September 2018, and the statement of accounting policies and other explanatory information.

In our opinion:

- a) the reported outcomes and outputs, and quantification of the outputs to the extent practicable, in the statement of service performance are suitable;
- b) the accompanying performance report gives a true and fair view of:
 - i) the entity information for the year then ended;
 - ii) the service performance for the year then ended; and
 - iii) the financial position of Nga Kaihoe Aotearoa (Waka Ama New Zealand) Inc. as at 30 September 2018 and of its financial performance, and cash flows for the year then ended.

in accordance with Public Benefit Entity Simple Format Reporting – Accrual (Not-For-Profit) issued by the New Zealand Accounting Standards Board.

We conducted our audit of the statement of financial performance, statement of financial position, statement of cash flows, statement of accounting policies and notes to the performance report in accordance with International Standards on Auditing (New Zealand) (ISAs (NZ)), and the audit of the entity information and statement of service performance in accordance with the International Standard on Assurance Engagements (New Zealand) ISAE (NZ) 3000 (Revised).

Our responsibilities under those standards are further described in the Auditor's Responsibilities for the Audit of the Performance Report section of our report. We are independent of the entity in accordance with Professional and Ethical Standard 1 (Revised) Code of Ethics for Assurance Practitioners issued by the New Zealand Auditing and Assurance Standards Board, and we have fulfilled our other ethical responsibilities in accordance with these requirements. We believe that the audit evidence we have obtained is sufficient and appropriate to provide a basis for our opinion.

Other than in our capacity as auditor we have no relationship with, or interests in, the entity.

CHARTERED ACCOUNTANTS & ADVISORS

Level 4, 21 Queen Street
Auckland 1010, New Zealand
PO Box 106 090
Auckland 1143, New Zealand
Telephone: +64 9 366 5000
williambuck.co.nz

William Buck Audit (NZ) Limited

Responsibilities of the Board for the Performance Report

The Board is responsible for:

- a) Identifying outcomes and outputs, and quantifying the outputs to the extent practicable, that are relevant, reliable, comparable and understandable, to report in the statement of service performance;
- b) the preparation of a performance report on behalf of the entity that gives a true and fair view, which comprises:
 - the entity information;
 - the statement of service performance; and
 - the statement of financial performance, statement of financial position, statement of cash flows, statement of accounting policies and notes to the performance reportin accordance with Public Benefit Entity Simple Format Reporting – Accrual (Not-For-Profit) issued by the New Zealand Accounting Standards Board, and
- c) for such internal control as the Board determine is necessary to enable the preparation of the performance report that is free from material misstatement, whether due to fraud or error.

In preparing the performance report, the Board is responsible on behalf of the entity for assessing the entity's ability to continue as a going concern, disclosing, as applicable, matters related to going concern and using the going concern basis of accounting unless the Board either intends to liquidate the entity or to cease operations, or have no realistic alternative but to do so.

Auditor's Responsibilities for the Audit of the Financial Statements

Our objectives are to obtain reasonable assurance about whether the performance report is free from material misstatement, whether due to fraud or error, and to issue an auditor's report that includes our opinion. Reasonable assurance is a high level of assurance, but is not a guarantee that an audit conducted in accordance with ISAs (NZ) and ISAE (NZ) 3000 (Revised) will always detect a material misstatement when it exists. Misstatements can arise from fraud or error and are considered material if, individually or in the aggregate, they could reasonably be expected to influence the economic decisions of users taken on the basis of this performance report.

As part of an audit in accordance with ISAs (NZ) and ISAE (NZ) 3000 (Revised), we exercise professional judgement and maintain professional scepticism throughout the audit. We also:

- Identify and assess the risks of material misstatement of the performance report, whether due to fraud or error, design and perform audit procedures responsive to those risks, and obtain audit evidence that is sufficient and appropriate to provide a basis for our opinion. The risk of not detecting a material misstatement resulting from fraud is higher than for one resulting from error, as fraud may involve collusion, forgery, intentional omissions, misrepresentations, or the override of internal control.
- Obtain an understanding of internal control relevant to the audit in order to design audit procedures that are appropriate in the circumstances, but not for the purpose of expressing an opinion on the effectiveness of the entity's internal control.
- Evaluate the appropriateness of accounting policies used and the reasonableness of accounting estimates and related disclosures made by management.
- Conclude on the appropriateness of the use of the going concern basis of accounting by the Board and, based on the audit evidence obtained, whether a material uncertainty exists related to events

or conditions that may cast significant doubt on the entity's ability to continue as a going concern. If we conclude that a material uncertainty exists, we are required to draw attention in our auditor's report to the related disclosures in the performance report or, if such disclosures are inadequate, to modify our opinion. Our conclusions are based on the audit evidence obtained up to the date of our auditor's report. However, future events or conditions may cause the entity to cease to continue as a going concern.

- Evaluate the overall presentation, structure and content of the performance report, including the disclosures, and whether the performance report represents the underlying transactions and events in a manner that achieves fair presentation.
- Perform procedures to obtain evidence about and evaluate whether the reported outcomes and outputs, and quantification of the outputs to the extent practicable, are relevant, reliable, comparable and understandable.

We communicate with the Board regarding, among other matters, the planned scope and timing of the audit and significant audit findings, including any significant deficiencies in internal control that we identify during our audit.

The engagement director on the audit resulting in this independent auditor's report is Alison Anderson.

Restriction on Distribution and Use

This report is made solely to the entity's members, as a body. Our audit work has been undertaken so that we might state to the entity's members those matters which we are required to state to them in an auditor's report and for no other purpose. To the fullest extent permitted by law, we do not accept or assume responsibility to anyone other than the entity and the entity's members, as a body, for our audit work, for this report or for the opinions we have formed.

A handwritten signature in blue ink that reads 'William Buck'.

William Buck Audit (NZ) Limited

Auckland
20 December 2018

NGA KAIHOE O AOTEAROA (WAKA AMA NEW ZEALAND) INCORPORATED

Performance Report

For the year ended
30 September 2018

Contents

	Page
Non-Financial Information:	
Entity Information	1
Statement of Service Performance	3
Financial Information:	
Statement of Financial Performance	4
Statement of Financial Position	5
Statement of Cash Flows	6
Statement of Accounting Policies	7
Notes to the Performance Report	8 to 13
Audit Report	14

NGA KAIHOE O AOTEAROA (WAKA AMA NEW ZEALAND) INCORPORATED

Entity Information

"Who are we?", "Why do we exist?"

For the year ended

30 September 2018

Legal Name of Entity:	NGA KAIHOE O AOTEAROA (WAKA AMA NEW ZEALAND) INCORPORATED
Other Name of Entity (if any):	Waka Ama New Zealand
Type of Entity and Legal Basis (if any):	Registered Charity, Incorporated Society
Registration Number:	CC44378

Entity's Purpose or Mission:

To lead the development, practice and promotion of the sport and culture of Waka Ama.

Entity Structure:

Incorporated Society and Registered Charity

Main Sources of the Entity's Cash and Resources:

Waka Ama New Zealand obtains funds from sporting bodies and charitable institutions to enable them to promote the sport in New Zealand. In addition entry fees are charged for events to contribute to the cost of running those events

Main Methods Used by the Entity to Raise Funds:

Applications are made to charitable trusts and entities for grants. Contracts are also entered into with sporting funders such as Sport New Zealand for ongoing annual funding.

Entity's Reliance on Volunteers and Donated Goods or Services:

Waka Ama New Zealand is governed by a voluntary board acting as the executive committee with oversight of the annual plan and schedule of events and supervision of the financial affairs of the entity

NGA KAIHOE O AOTEAROA (WAKA AMA NEW ZEALAND) INCORPORATED

Entity Information

"Who are we?", "Why do we exist?"

For the year ended
30 September 2018

Additional Information:

Board Members

Paora Howe - Chairperson
Tim Marshall - Deputy Chairperson
Moana-Lee Raihania
Ralph Ruka (Resigned November 2017)
Paul Dahl (Resigned November 2017)
Laurie Durand
Scott Linklater
Ngairi Pehi (Elected January 2018)
Zalene Douglas (Appointed January 2018)

Chief Executive

Lara Collins

Contact details

Physical Address:	Sport Auckland House, Level 4 Alexandra Park Function Centre Gate B, Greenlane Rd West, Epsom Auckland 1051
Postal Address:	PO BOX 26599 Epsom Auckland 1344

NGA KAIHOE O AOTEAROA (WAKA AMA NEW ZEALAND) INCORPORATED

Statement of Service Performance

"What did we do?", When did we do it?"

For the year ended

30 September 2018

Description of the Entity's Outcomes:

Our goals include organising successful events that meet the needs of our membership, increasing participation in the sport of Waka Ama.

Effective governance of the sport of Waka Ama including representing New Zealand at the World Club and Elite Championships.

Description and Quantification (to the extent practicable) of the Entity's Outputs:	Actual		Actual
	This Year		Last Year
Participation (number of affiliated individuals)	5,202		5,419
Participation (number of affiliated member clubs)	83		83
Medals gained at World Championship	Elite 14 Gold 18 Silver 7 Bronze Club 11 Gold 12 Silver 10 Bronze (Sprints)		3 Gold 5 Silver 2 Bronze (Distance)
Number of sanctioned events held	78		72
Number of participants to:			
- National Sprint Championships	3,286		3,277
- National Long Distance Championships	782		782
- National Secondary School Championships	1,734		1,850
- Takapuna Beach Cup	1,296		1,228

NGA KAIHOE O AOTEAROA (WAKA AMA NEW ZEALAND) INCORPORATED

Statement of Financial Performance

"How was it funded?" and "What did it cost?"

For the year ended

30 September 2018

	Note	Actual This Year \$		Actual Last Year \$
Revenue				
Funding, grants and sponsorship revenue	1	451,848		364,119
Members fees, subscriptions and other event revenue	1	732,457		512,213
Revenue from providing services	1	155,133		263,239
Interest, dividends and other investment revenue		1,063		983
Other revenue		-		-
Total Revenue		1,340,501	-	1,140,554
Expenses				
Expenses related to fundraising		-		-
Volunteer, contract services and employee related costs	2	338,476		315,113
Costs related to events and providing goods or services	2	887,487		722,712
Other expenses	2	102,267		100,444
Total Expenses		1,328,230	-	1,138,269
Surplus/(Deficit) for the Year		12,271	-	2,285

NGA KAIHOE O AOTEAROA (WAKA AMA NEW ZEALAND) INCORPORATED

Statement of Financial Position

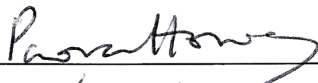
"What the entity owns?" and "What the entity owes?"

As at

30 September 2018

	Note	Actual This Year \$		Actual Last Year \$
Assets				
Current Assets				
Bank accounts and cash	3	78,040		104,616
Debtors and prepayments	3	72,162		55,011
Other current assets		-		-
Total Current Assets		150,202		159,627
Non-Current Assets				
Property, plant and equipment	4	18,148		19,977
Total Non-Current Assets		18,148		19,977
Total Assets		168,350		179,604
Liabilities				
Current Liabilities				
Creditors and accrued expenses	3	29,896		43,256
Employee costs payable	3	7,396		10,069
Unused donations and grants with conditions	3	5,600		33,099
Other income in advance	3	39,389		19,382
Total Current Liabilities		82,281		105,806
Total Assets less Total Liabilities (Net Assets)		86,069		73,798
Accumulated Funds				
Capital contributed by owners or members		-		-
Accumulated surpluses or (deficits)	5	86,069		73,798
Reserves		-		-
Total Accumulated Funds		86,069		73,798

Signed:



 Chairperson



 Board Member

Date

1/12/2018

NGA KAIHOE O AOTEAROA (WAKA AMA NEW ZEALAND) INCORPORATED

Statement of Cash Flows

"How the entity has received and used cash"

For the year ended
30 September 2018

	Actual This Year \$		Actual Last Year \$
Cash Flows from Operating Activities			
Cash was received from:			
Donations, fundraising and other similar receipts	456,856		416,600
Fees, subscriptions and other receipts from members	714,516		502,425
Receipts from providing goods or services	142,633		263,239
Interest, dividends and other investment receipts	1,063		983
Cash was applied to:			
Payments to suppliers and employees	1,337,434		1,143,164
Donations or grants paid	-		-
Net Cash Flows from Operating Activities	(22,366)		40,083
Cash flows from Investing and Financing Activities			
Cash was received from:			
Receipts from the sale of property, plant and equipment	-		-
Cash was applied to:			
Payments to acquire property, plant and equipment	4,210		5,376
Net Cash Flows from Investing and Financing Activities	(4,210)		(5,376)
Net Increase / (Decrease) in Cash	(26,576)		34,707
Opening Cash	104,616		69,909
Closing Cash	78,040		104,616
This is represented by:			
Bank Accounts and Cash	78,040		104,616

NGA KAIHOE O AOTEAROA (WAKA AMA NEW ZEALAND) INCORPORATED

Statement of Accounting Policies

"How did we do our accounting?"

For the year ended
30 September 2018

Basis of Preparation

NGA KAIHOE O AOTEAROA (WAKA AMA NEW ZEALAND) INCORPORATED has elected to apply PBE SFR-A (NFP) Public Benefit Entity Simple Format Reporting - Accrual (Not-For-Profit) on the basis that it does not have public accountability and has total annual expenses of equal to or less than \$2,000,000. All transactions in the Performance Report are reported using the accrual basis of accounting. The Performance Report is prepared under the assumption that the entity will continue to operate in the foreseeable future.

Goods and Services Tax (GST)

All amounts are recorded exclusive of GST, except for Debtors and Creditors which are stated inclusive of GST

Income Tax

NGA KAIHOE O AOTEAROA (WAKA AMA NEW ZEALAND) INCORPORATED is wholly exempt from New Zealand income tax having fully complied with all statutory conditions for these exemptions.

Bank Accounts and Cash

Bank accounts and cash in the Statement of Cash Flows comprise cash balances and bank balances (including short term deposits) with original maturities of 90 days or less.

Property Plant & Equipment

Property, plant and equipment are recorded at cost less accumulated depreciation and impairment losses. Depreciation of property, plant & equipment is calculated using diminishing value tax rate so as to expense the cost of the assets over their useful lives. Depreciation of all assets is reported in the Statement of Comprehensive Income.

The rates are shown below:

Office Equipment 12%-50% DV

Plant & Equipment 15.6% DV

Receivables

Receivables are stated at their estimated realisable value. Bad debts are written off in the period in which they are identified.

Revenue

Revenue is recognised to the extent that it is probable that the economic benefits will flow to the entity and the revenue can be reliably measured. Grant income is recorded in the period to which it the conditions associated with the grant are substantially met. Unconditional donations and grants are recorded when they are received or when the right to receive them is established.

Changes in Accounting Policies

There have been no changes in accounting policies during the financial year (last year - nil)

NGA KAIHOE O AOTEAROA (WAKA AMA NEW ZEALAND) INCORPORATED

Notes to the Performance Report

For the year ended
30 September 2018

Note 1 : Analysis of Revenue

Revenue Item	Analysis	This Year \$	Last Year \$
Funding, grants and sponsorship revenue	New Zealand Community Trust	65,600	35,000
	First Sovereign Trust	-	10,000
	Sport New Zealand	165,000	156,750
	Ngati Kahungunu	5,000	-
	Waipa District Council	10,000	8,000
	North and South	14,808	-
	Foundation North	-	27,500
	Te Wananga o Aotearoa	65,000	65,000
	Blue Sky Community Trust	4,000	6,000
	Dragon Community Trust	3,500	5,804
	Four Winds Trust	18,000	13,500
	Halberg Disability Sport Foundation	11,000	12,000
	Maritime New Zealand	19,500	-
	ATEED	17,390	-
	Pub Charity	15,000	4,565
	Youthtown	10,000	-
	Trust Waikato	20,000	20,000
	Napier City Council	8,050	-
Other	-	-	
Total		451,848	364,119

Revenue Item	Analysis	This Year \$	Last Year \$
Members fees, subscriptions and other event revenue	Sprint Nationals entry fees	163,605	163,505
	Sprint Nationals parking, merchandise and other	112,804	92,153
	School Nationals	56,278	62,925
	Long Distance Nationals	44,616	-
	Worlds-Campaign Income	251,445	108,268
	Takapuna Beach Cup	103,709	85,362
	Total		732,457

Revenue Item	Analysis	This Year \$	Last Year \$
Revenue from providing services	Affiliation fees	51,712	52,889
	ID Card	10,509	10,534
	Surfing New Zealand - Ultimate Waterman	-	41,292
	Auckland University	19,000	15,000
	Tamaki Herenga Waka Trust	-	12,000
	NZ Canoe Federation - World Masters Games	-	76,978
	Administration, Coaching Courses & Other	73,912	54,546
	Total		155,133

NGA KAIHOE O AOTEAROA (WAKA AMA NEW ZEALAND) INCORPORATED

Notes to the Performance Report

For the year ended

30 September 2018

Note 2 : Analysis of Expenses

Expense Item	Analysis	This Year \$	Last Year \$
Expenses related to fundraising	Nil	-	-
	Total	-	-

Expense Item	Analysis	This Year \$	Last Year \$
Volunteer, contract services and employee related costs	Contract Services	81,791	108,669
	Salaries	256,685	206,444
	Total	338,476	315,113

Expense Item	Analysis	This Year \$	Last Year \$
Costs related to events and providing goods or services	Nationals	258,627	235,934
	Long Distance Nationals	70,674	11,718
	School Nationals	55,193	54,956
	World Campaign	314,383	176,173
	Membership cards	6,599	6,147
	Special projects (Coaching course delivery, contract event delivery and other)	90,890	151,307
	Takapuna Beach cost of sales	91,121	86,477
	Total	887,487	722,712

Expense Item	Analysis	This Year \$	Last Year \$
Other expenses	Advertising	4,337	2,433
	Audit fees	5,184	5,705
	Bank fees	417	294
	Consulting & accounting	1,708	1,476
	Insurance	11,932	12,600
	NKOA meetings	10,390	12,698
	Office, communications and stationery	13,353	10,864
	Rent	19,800	19,800
	Travel	9,254	8,750
	Vehicle expenses	13,849	14,739
	Depreciation	6,039	6,421
	Other operating expenses	6,004	4,664
	Total	102,267	100,444

NGA KAIHOE O AOTEAROA (WAKA AMA NEW ZEALAND) INCORPORATED

Notes to the Performance Report

For the year ended
30 September 2018

Note 3 : Analysis of Assets and Liabilities

Asset Item	Analysis	This Year	Last Year
		\$	\$
Bank accounts and cash	Kiwibank - Operations Bank Account	16,826	36,666
	Kiwibank - Savings Account	16	16
	Kiwibank - Term Savings Account	60,693	67,470
	Kiwibank - World USD Account	505	464
	Total	78,040	104,616

Asset Item	Analysis	This Year	Last Year
		\$	\$
Debtors and prepayments	Accounts receivable	45,632	27,691
	Accounts receivable - events	-	-
	Prepayments	26,530	27,320
	Total	72,162	55,011

Liability Item	Analysis	This Year	Last Year
		\$	\$
Creditors and accrued expenses	Mastercard	673	4,559
	Accounts payable	7,437	21,153
	GST payable	13,267	9,377
	Accrued expenses	8,519	8,167
	Total	29,896	43,256

Liability Item	Analysis	This Year	Last Year
		\$	\$
Employee costs payable	Holiday pay provision	7,396	10,069
	Total	7,396	10,069

Liability Item	Analysis	This Year	Last Year
		\$	\$
Grants with conditions and other income in advance	Grants in advance	5,600	33,099
	Income in advance (entry fees)	39,389	19,382
	Total	44,989	52,481

NGA KAIHOE O AOTEAROA (WAKA AMA NEW ZEALAND) INCORPORATED

Notes to the Performance Report

For the year ended
30 September 2018

Note 4 : Property, Plant and Equipment

This Year					
Asset Class	Opening Carrying Amount	Purchases	Sales/Disposals	Current Year Depreciation and Impairment	Closing Carrying Amount
Office equipment	3,746	4,210	-	3,920	4,036
Plant & Equipment	16,231	-	-	2,119	14,112
Total	19,977	4,210	-	6,039	18,148

Last Year					
Asset Class	Opening Carrying Amount	Purchases	Sales/Disposals	Current Year Depreciation and Impairment	Closing Carrying Amount
Office equipment	2,266	5,390	-	3,910	3,746
Plant & Equipment	18,742	-	-	2,511	16,231
Total	21,008	5,390	-	6,421	19,977

NGA KAIHOE O AOTEAROA (WAKA AMA NEW ZEALAND) INCORPORATED

Notes to the Performance Report

For the year ended
30 September 2018

Note 5: Accumulated Funds

This Year				
Description	Capital Contributed by Owners or Members	Accumulated Surpluses or Deficits	Reserves	Total
Opening Balance	-	73,798	-	73,798
Capital contributed by owners or members	-			-
Capital returned to owners or members	-			-
Surplus/(Deficit)		12,271		12,271
Distributions paid to owners or members		-		-
Transfer to Reserves		-	-	
Transfer from Reserves		-	-	
Closing Balance	-	86,069	-	86,069

Last Year				
Description	Capital Contributed by Owners or Members	Accumulated Surpluses or Deficits	Reserves	Total
Opening Balance	-	71,513	-	71,513
Capital contributed by owners or members				-
Capital returned to owners or members				-
Surplus/(Deficit)		2,285		2,285
Distributions paid to owners or members		-		-
Transfer to Reserves		-	-	
Transfer from Reserves		-	-	
Closing Balance	-	73,798	-	73,798

NGA KAIHOE O AOTEAROA (WAKA AMA NEW ZEALAND) INCORPORATED

Notes to the Performance Report

For the year ended
30 September 2018

Note 6 - 8

Note 6 : Commitments and Contingencies		At balance date	At balance date
Commitment	Explanation and Timing	This Year	Last Year
		\$	\$
Commitments to lease or rent assets	No later than one year	14,984	15,746
	One to five years	5,084	11,693
	Motor vehicle and premises leases; total commitment	20,068	27,439
Commitment to purchase property, plant and equipment	Nil		
Commitments to provide loans or grants	Nil		

Contingent Liabilities and Guarantees

There are no contingent liabilities or guarantees as at balance date (Last Year - nil)

Note 7: Related Parties

Related Party Disclosures:

There were no transactions involving related parties during the financial year. (Last Year - Nil).

There are no outstanding related party balances at the end of the period and no related party balances have been written off during the year. (Last Year - Nil).

Note 8: Events After the Balance Date

Events After the Balance Date:

There were no events that have occurred after the balance date that would have a material impact on the Performance Report. (Last Year Nil)



*NGA KAIHOE O AOTEAROA
NEW ZEALAND*



wakaama
Outrigger / Va'a / New Zealand

Nga Kaihoe o Aotearoa (Waka Ama New Zealand) Inc
PO Box 26599, Epsom, Auckland 1344
www.wakaama.co.nz